

Light efficiency:

117 Lumen/Watt

Color temperature:

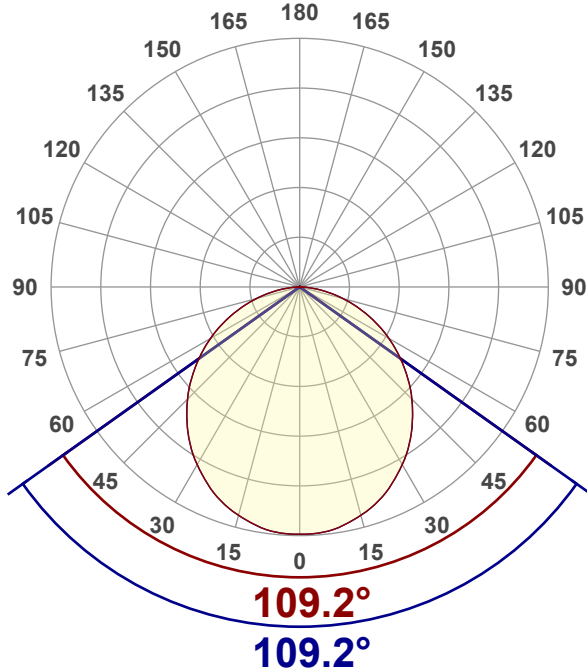
3973 K

Light quality:

CRI:96.7, R_g:93.1, R_f:102.4**P: 2 / V: - / F: 2****Output: 1693 lm****Peak: 610 cd****Power: 14.5 W****Voltage: 120 V****Current: 0.124 A****PF: 0.98****THD: 15.39 %**

Angular Distribution

0° and 90° plane



Product name:

SLM6-16W-CCT-WH - 4000K

Test Date:

11/27/2025

Beam Angle (50% of the brightness of the centre):

109.2°

Field Angle (10% of the brightness of the centre):

161.4°

Cut Off Angle (2.5% of the brightness of the centre):

174.5°

Beam Details

*measured at centre of beam

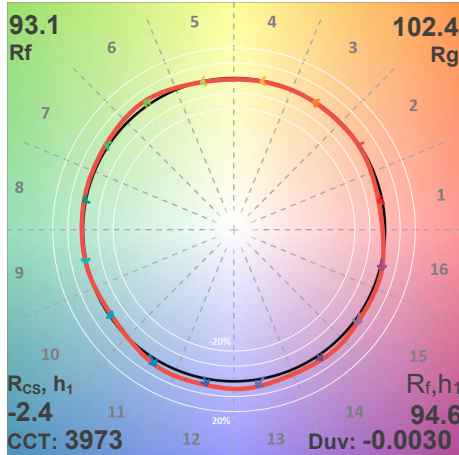
Mounting Height (feet)\(meter)	Lux*	Footcandles*	Beam width (feet) / (meter)
4 ft / 1.2 m	410 lx	38 fc	11.3 ft / 3.4 m
8 ft / 2.4 m	103 lx	10 fc	22.5 ft / 6.9 m
12 ft / 3.7 m	46 lx	4 fc	33.8 ft / 10.3 m
16 ft / 4.9 m	26 lx	2 fc	45 ft / 13.7 m
20 ft / 6.1 m	16 lx	2 fc	56.3 ft / 17.2 m

Beam center

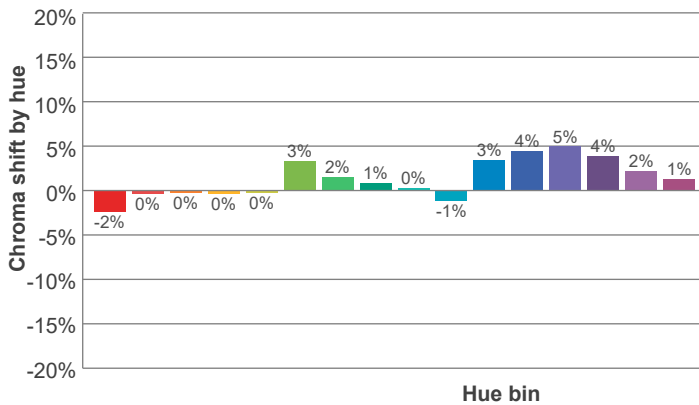
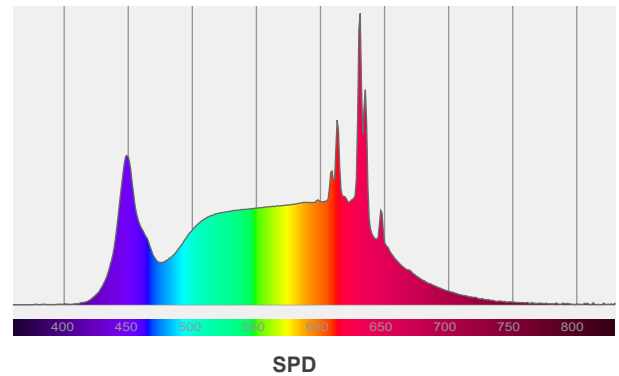
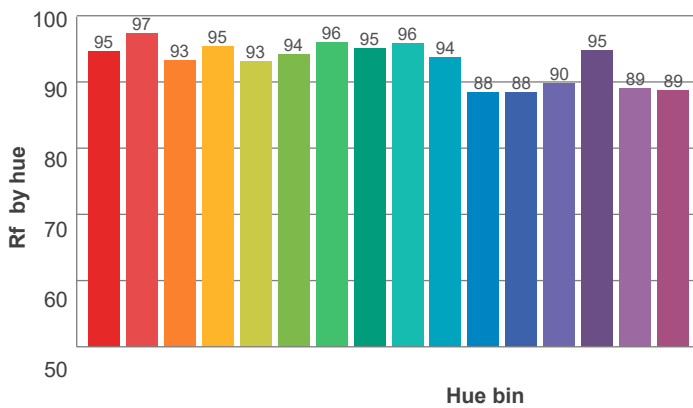
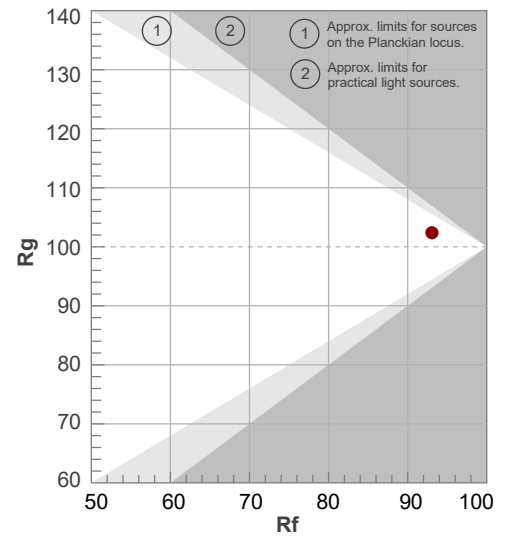
Liteline Corporation – Richmond Hill, Canada – www.liteline.com Liteline Web -Downloads R1.6

ANSI/IES TM-30-18

P: 2 / V: - / F: 2



Hue Bin	R _f	Shifts (%)	
		Chroma	Hue
1	95	-2%	-1%
2	97	0%	1%
3	93	0%	3%
4	95	0%	1%
5	93	0%	2%
6	94	3%	2%
7	96	2%	0%
8	95	1%	1%
9	96	0%	3%
10	94	-1%	4%
11	88	3%	7%
12	88	4%	2%
13	90	5%	-5%
14	95	4%	1%
15	89	2%	-7%
16	89	1%	-7%



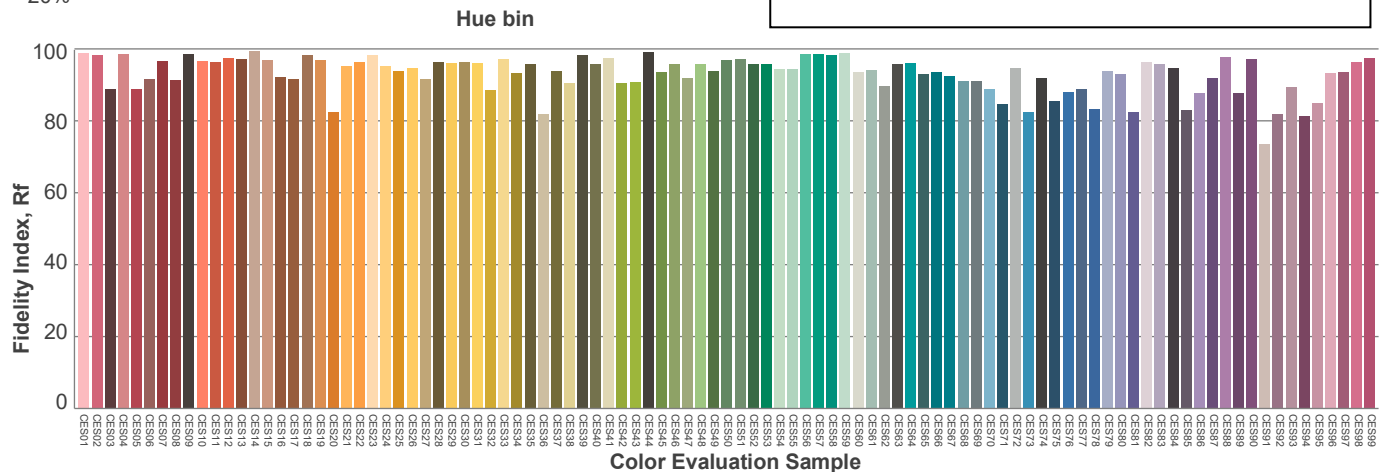
Red: 24.9%, Power=5.8mW

Blue: 13.5%, Power=11.4mW

Green: 30.5%, Power=22.5mW

UVA: 0%, Power=0.0mW

Dominant Wavelength: 583nm

1st Peak Wavelength: 631nm2nd Peak Wavelength: 613nm

Glare Evaluation According to UGR

p Ceiling		70	70	50	50	30	70	70	50	50	30
p Walls		50	30	50	30	30	50	30	50	30	30
p Floor		20	20	20	20	20	20	20	20	20	20
Room size X Y		Viewing direction at right angles to lamp axis					Viewing direction parallel to lamp axis				
2H	2H	25.9	27.1	26.2	27.4	27.7	25.9	27.1	26.2	27.4	27.7
	3H	27.4	28.6	27.8	28.9	29.1	27.4	28.6	27.8	28.9	29.1
	4H	28.0	29.2	28.4	29.5	29.7	28.0	29.2	28.4	29.5	29.7
	6H	28.5	29.6	28.8	29.9	30.2	28.5	29.6	28.8	29.9	30.2
	8H	28.7	29.7	29.0	30.0	30.4	28.7	29.7	29.0	30.0	30.4
	12H	28.8	29.7	29.1	30.1	30.5	28.8	29.7	29.1	30.1	30.5
4H	2H	26.5	27.7	26.9	28.0	28.3	26.5	27.7	26.9	28.0	28.3
	3H	28.3	29.3	28.7	29.6	30.1	28.3	29.3	28.7	29.6	30.1
	4H	29.0	29.9	29.4	30.3	30.8	29.0	29.9	29.4	30.3	30.8
	6H	29.5	30.4	30.0	30.8	31.2	29.5	30.4	30.0	30.8	31.2
	8H	29.8	30.6	30.3	30.9	31.3	29.8	30.6	30.3	30.9	31.3
	12H	29.9	30.6	30.4	31.0	31.5	29.9	30.6	30.4	31.0	31.5
8H	4H	29.3	30.1	29.8	30.4	30.8	29.3	30.1	29.8	30.4	30.8
	6H	30.0	30.6	30.5	31.1	31.6	30.0	30.6	30.5	31.1	31.6
	8H	30.3	30.8	30.8	31.4	32.0	30.3	30.8	30.8	31.4	32.0
	12H	30.5	31.0	31.1	31.5	32.1	30.5	31.0	31.1	31.5	32.1
12H	4H	29.3	29.9	29.8	30.4	30.8	29.3	29.9	29.8	30.4	30.8
	6H	30.1	30.6	30.6	31.1	31.8	30.1	30.6	30.6	31.1	31.8
	8H	30.4	30.9	31.0	31.4	32.0	30.4	30.9	31.0	31.4	32.0
Variation of the observer position for the luminaire distance S											
S = 1.0H		0.1 / -0.1					0.1 / -0.1				
S = 1.5H		0.1 / -0.2					0.1 / -0.2				
S = 2.0H		0.4 / -0.5					0.4 / -0.5				
Standard table		n/a					n/a				
Correction summand		n/a					n/a				
Corrected glare indices referring to 1693 lm total luminous flux											